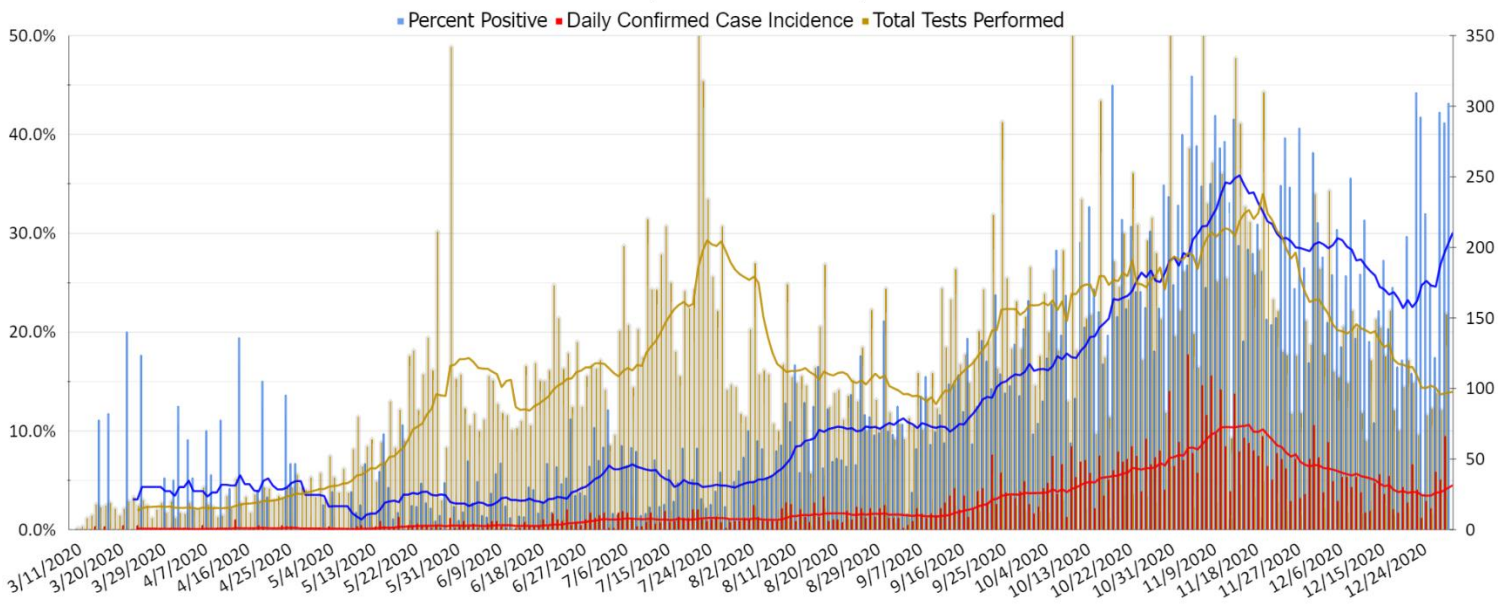


March 1st, 2020 – December 31st, 2020

| Cumulative Case Counts | |
|------------------------|--------|
| Confirmed | 5,343 |
| Probable | 619 |
| Suspect | 175 |
| Negative | 27,295 |
| Confirmed Outbreaks | 172 |
| Deaths | 82 |

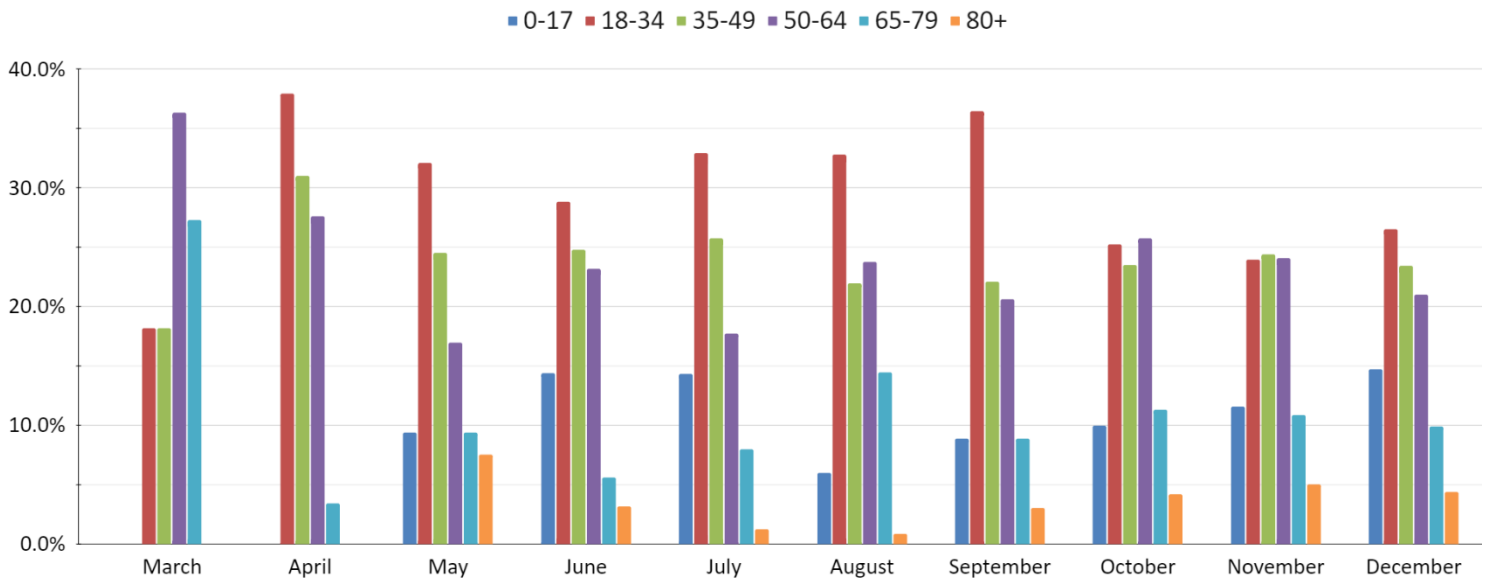
COVID-19 Case Data (Epidemic Curve)

March 1, 2020 - December 31, 2020



Case Data by Age Group (Percentage of All Cases)

March 1, 2021 - December 31, 2020

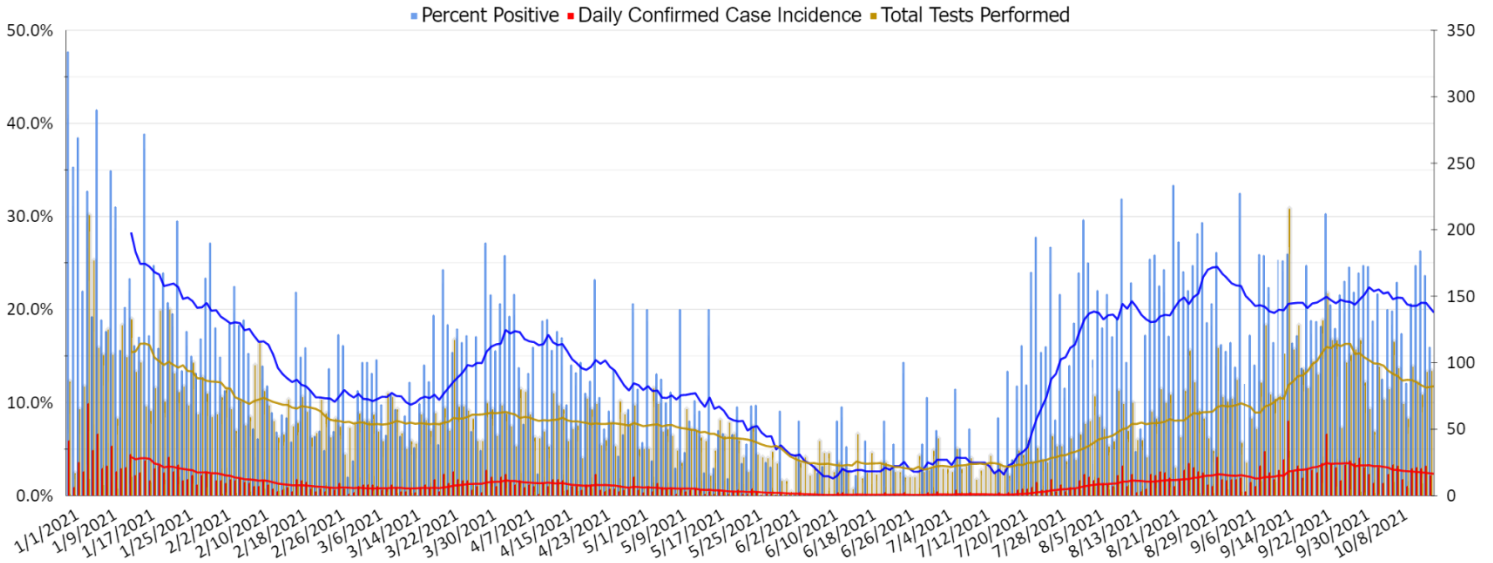


January 1st, 2021 – October 15th, 2021

| Cumulative Case Counts | | Vaccine Administration | |
|------------------------|--------|--|--------|
| Confirmed | 2,876 | Partially Vaccinated | 51.8% |
| Probable | 640 | Fully Vaccinated | 49.6% |
| Suspect | 166 | Doses Administered (JCHD Jurisdiction Residents Only) | 69,972 |
| Negative | 13,829 | Approximately 600 doses of COVID-19 vaccine were administered to Jefferson County residents prior to 01/01/2021. | |
| Confirmed Outbreaks | 63 | | |
| Deaths | 45 | | |

COVID-19 Case Data (Epidemic Curve)

January 1, 2021 - October 15, 2021



Case Data by Age Group (Percentage of All Cases)

January 1, 2021 - October 15, 2021

